

AGC LOW-CARBON GLASS

Our glass range with a reduced carbon footprint

The AGC logo is displayed in a white rectangular box. It consists of the letters 'AGC' in a bold, blue, sans-serif font. A small red square is positioned between the 'A' and the 'G'.

Your Dreams, Our Challenge

The name says it all

LOW-CARBON GLASS

Low-Carbon Glass is the latest innovation in our glass range, boasting a significantly reduced carbon footprint compared to standard float glass.

To produce Low-Carbon Glass, we took a holistic approach to every part of the manufacturing process in order to optimise CO₂ emissions, not only before and during the production process itself, but up to and including delivery to the customer. Through this in-depth process we developed Low-Carbon Planibel Clearlite, our low-carbon float glass featuring a reduced embodied carbon footprint of 5.5 kg* CO₂ eq/m² for 4 mm float glass.

Low-Carbon Planibel Clearlite looks identical to and delivers the exact same performance as standard Planibel Clearlite float glass. It can be laminated or coated with solar control or thermal insulation coatings and can be processed into double and triple glazing units.

Embrace the future of glass by adopting the new normal: AGC Low-Carbon Glass.

Different yet the same

LOW-CARBON GLASS

WHAT'S SO SPECIAL ABOUT IT?

WHAT DOES IT MEAN FOR YOU?

Same performance and quality as standard AGC glass ranges — Low-Carbon Glass can replace AGC standard glass without changing the specification as it delivers the exact same technical performance.

Looks exactly the same as standard float glass — Low-Carbon Glass does not compromise on aesthetics. It looks exactly the same as standard AGC glass.

Significantly less embodied carbon — A circular and sustainably produced product. Ideal for low-carbon buildings and for reducing a company's carbon footprint.

Easy processing — Low-Carbon Glass can be processed in the exact same way as standard float glass.

A full product range — Low-Carbon Planibel Clearlite (glass substrate)

- > laminated version:
Low-Carbon Stratobel,
Low-Carbon Stratophone
- > low-e coating version:
Low-Carbon iplus
- > solar control coating version:
Low-Carbon Stopray,
Low-Carbon Energy
- > DGUs and TGUs
- > available in many other different product ranges



AGC Low-Carbon Glass:

- > Reduced embodied carbon footprint of 5.5 kg* CO₂ eq/m² for 4mm float glass
- > Available in a wide range of products and thicknesses
- > At least 50% recycled content**
- > Third-party verified EPD
- > No compromise on performance and aesthetics

* Global Warming Potential (GWP) Cradle-to-Gate (A1-A3) as defined in NF EN 15804+A2:2019

** Calculated according to ISO 14021:2016, excluding internal cullet

To produce Low-Carbon Glass a portion of raw materials is replaced by a high percentage of cullet.

Therefore AGC introduces its Recycle Glass service collecting flat glass wastes from industrial losses and from renovation or deconstruction projects to be recycled in flat glass production.

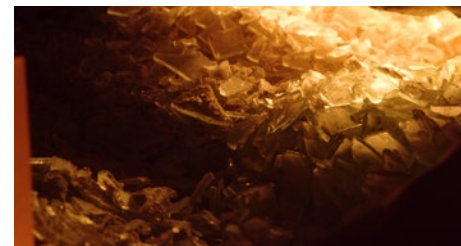
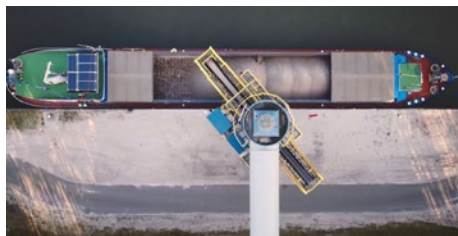


Low-Carbon Glass

THE HOLISTIC APPROACH

AGC has tackled CO₂ emissions at every stage in the production process, resulting in drastically lower emissions and an environmentally cleaner product:

1 SUSTAINABLY SOURCED RAW MATERIALS



2 HIGHLY EFFICIENT MELTING FURNACES INCLUDING ELECTRO-BOOSTING



3 INCREASED USE OF CULLET



4 GREEN ENERGY SOURCES

5 OPTIMISED TRANSPORT BETWEEN GROUP SITES FOR FINISHING PROCESSES







6 OPTIMISED TRANSPORT FOR FINISHED PRODUCTS

Watch the video

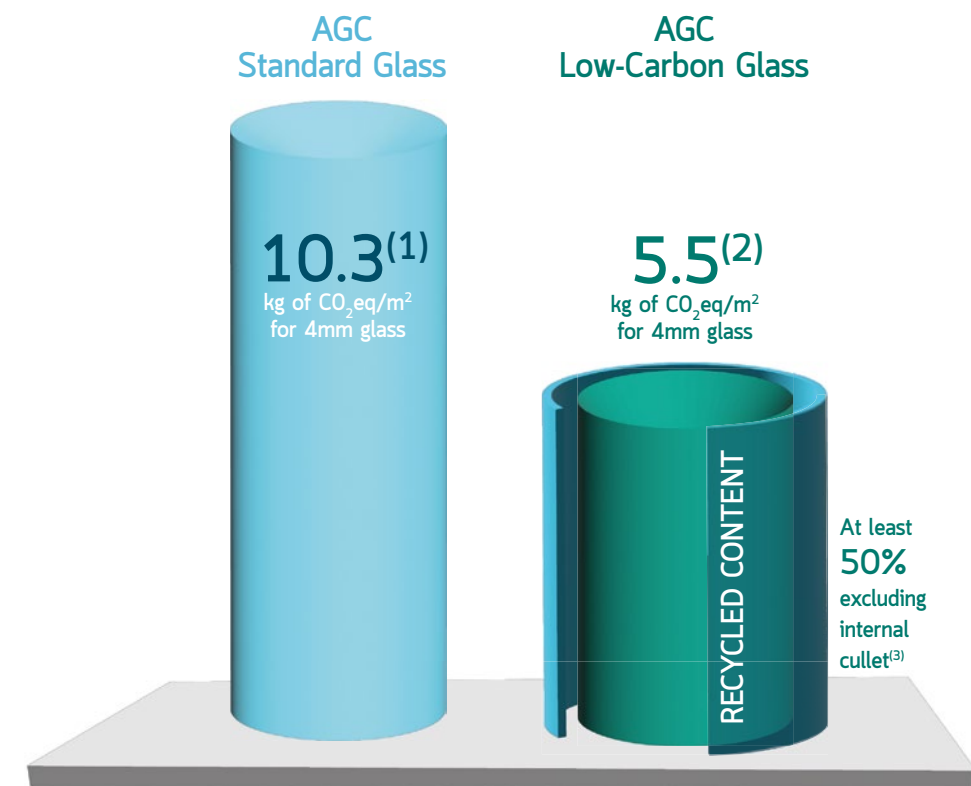


AGC Low-Carbon Glass is available as:

-  Monolithic clear float glass — Low-Carbon Planibel Clearlite
-  Laminated safety and acoustic glass — Low-Carbon Stratobel and Low-Carbon Stratophone
-  Thermal insulation glass — Low-Carbon iplus 1.1 and Low-Carbon iplus 1.0
-  Solar control glass — Low-Carbon Stopray and Low-Carbon Energy

- > Available in usual thicknesses ranging from 3 mm to 10 mm
- > Available for coatings in Low-Carbon T version - on demand
- > Can be assembled into DGUs and TGUs (Low-Carbon Thermobel)
- > Available in many other AGC product ranges

CARBON FOOTPRINT (GWP)



For more information on GWP values for other glass combinations, please contact your AGC sales representative. Values to be considered within following frame conditions:

(1) Global Warming Potential (GWP) is expressed for Cradle-to-Gate (A1-A3) impacts as defined in NF EN 15804+A2:2019. Planibel 4 mm value is extrapolated from the results of the EPD Planibel 8 mm. EPD Planibel Clearlite registration number: 20240136345
 (2) Global Warming Potential (GWP) is expressed for Cradle-to-Gate (A1-A3) impacts as defined in NF EN 15804+A2:2019. EPD Low-Carbon Planibel Clearlite registration number: 20240437786
 (3) Calculated according to ISO 14021:2016



AGC, your partner for sustainable construction



Project: Nervesa 21, Milan, Italy
Project owner: Cromwell Group
Architect: Lombardini22
Facade glazed with 6,510 m² Low-Carbon Glass

9001346 EN - 03/2024

AGC GLASS EUROPE

T +32 2 409 30 00 - sales.headquarters@agc.com
AGC Glass Europe has representatives worldwide.
See www.agc-yourglass.com for further addresses.

